

# SF2000. 1/8

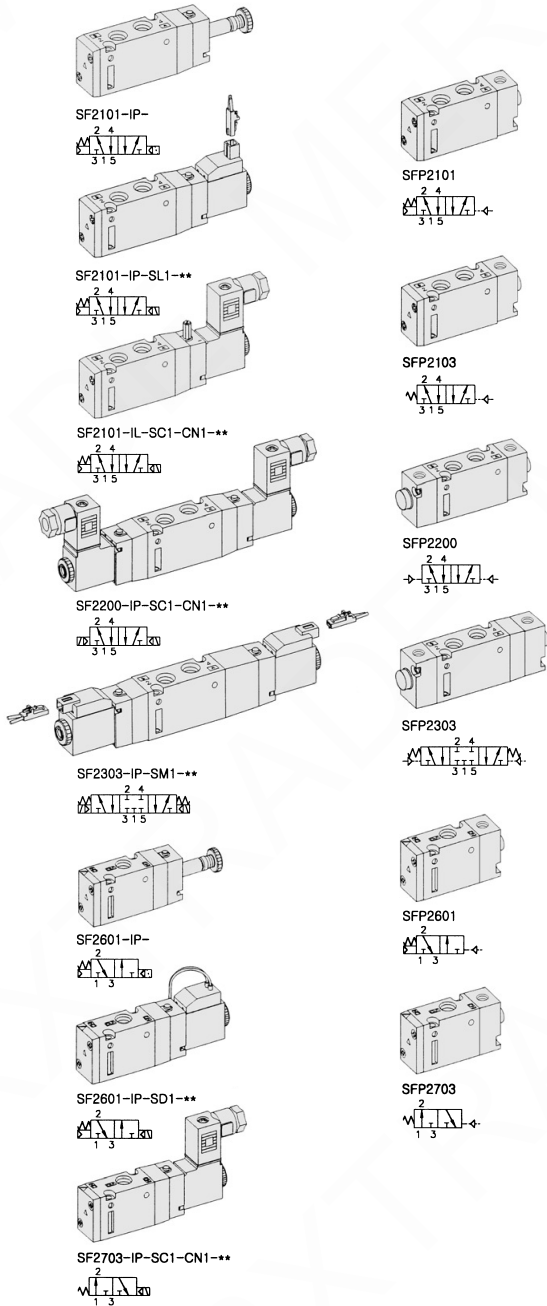
"F" FLEXIBLE Series  
Solenoid / Pneumatic Valves

- 5/2, 5/3, 3/2 - 1/8
- 18mm Body Width
- Transition Flow 700ℓ/min (5bar)

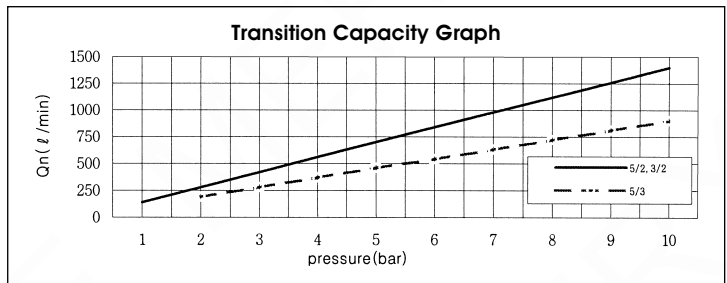


## SPECIFICATION

ITEM	FUNCTION	SOLENOID, PNEUMATIC	
		5, 3 Port 2 Position	5 Port 3 Position
Fluids		Compressed Air & Inert Gases	
Pressure(bar)		1.5~10.0	2.0~10.0
Eff. Sectional Area(mm <sup>2</sup> )-5bar		12.6	9.0
Ambient & Fluid Temp.		5~60°C (41~140°F)	
Response Time(5bar)		25ms or Less	35ms or Less
Max. Working Frequency		5c/sec	3c/sec
Lubrication		Not Required(Use ISO VG32 #)	
Manual Override		Push Button(Standard), Lever Lock(Option)	
Coil Insulation Class		F-Class or Equivalent	
Permissible Voltage Variation		±10% of Rated Voltage	
Off Min. Residual Voltage		AC:20% or Less / DC:10% or Less	
Power Consumption		Holding-AC:3.5VA(60Hz) / DC:2.5W	



\*\* : Voltage Selection (see page 62)



- ### The Material of Parts
- Valve Body : Die-Cast Aluminium
  - Spool : Aluminium
  - Seals : NBR
  - Spring : Stainless
  - Cap : Zinc Pressure Die-Cast
  - Pilot Parts : Glass Filled Nylon
  - Armature : Stainless Steel
  - Armature Seals : Viton

### Plug Connector With Clip

Ordering Code  
PG2-06 ( L : 600mm )  
PG2-10 ( L : 1,000mm )

\* The specification on each item can be amended without any prenotice to improve a performance.  
\* The specification on each item can be different from actual specification.

## ORDERING NO.

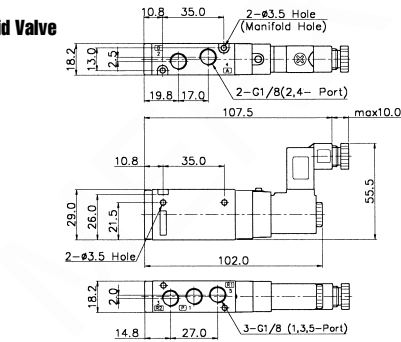
Valve Series	Function	Port Size & Thread	Return Method	Int/ Ext. Pilot	Manual Operator	Solenoid Coil Type	Connector Type	Voltage
<b>SF2 :</b> Solenoid Valve	1 5/2 Single 2 5/2 Double 3 5/3 Closed Center	0 G 1/8 1 NPT 1/8	0 None 1 Air + Spring 2 Air 3 Spring	I Internal Pilot	0 None P Push Non-Locking L Lever Locking	0 None SC1 3 Pin Connector Coil SG1 Grommet/ Flying Leads SD1 Grommet/ Flying Leads With LED SL1 90 Degree Plug-in Wire Assembly With LED SM1 180 Degree Plug-in Wire Assembly With LED	0 None CN1 Normal Connector CD1 Connector With LED CZ1 Connector With LED & Surge Suppressor	0 None A2 AC 220V A1 AC 110V A4 AC 24V D4 DC 24V D2 DC 12V
<b>SFP2 :</b> Pneumatic Valve	4 5/3 Open Center 5 5/3 Pressure Center 6 3/2 Normally Closed 7 3/2 Normally Open							



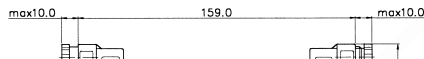
# Solenoid & Pilot Actuated Spool Valves

## 5Port 2Position Solenoid Valve

Single Solenoid  
SF2101-IP-SC1-CN1-\*\*\*

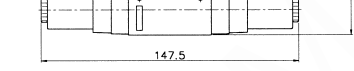
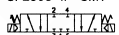


Double Solenoid  
SF2200-IP-SC1-CN1-\*\*\*

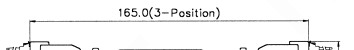
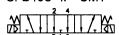


## 5Port 3-Position Solenoid Valve

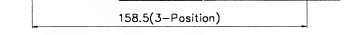
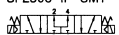
Closed Center  
SF2303-IP-SM1-\*\*\*



Exhaust Center  
SF2403-IP-SM1-\*\*\*

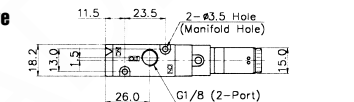


Pressure Center  
SF2503-IP-SM1-\*\*\*

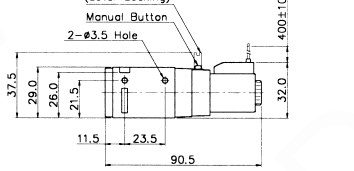


## 3Port 2Position Solenoid Valve

Normally Closed  
SF2601-IP-SD1-\*\*\*

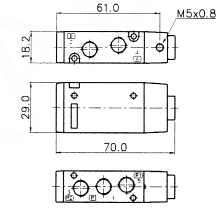


Normally Open  
SF2701-IP-SD1-\*\*\*

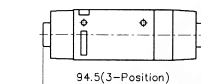
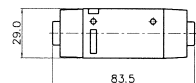


## 5Port 2Position Pneumatic Valve

Single Pneumatic  
SFP2101

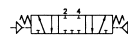


Double Pneumatic  
SFP2200

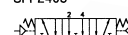


## 5Port 3-Position Pneumatic Valve

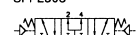
Closed Center  
SFP2303



Exhaust Center  
SFP2403

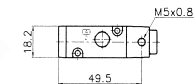


Pressure Center  
SFP2503

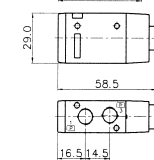


## 3Port 2Position Pneumatic Valve

Normally Closed  
SFP2601



Normally Open  
SFP2701



## Manifold Block Ordering Code

MF 2500		-		2	
Series	Manifold Station				
MF2500	5 Way	02	2-Station		
MF2300	3 Way	04	4-Station		
		06	6-Station		
		08	8-Station		
		10	10-Station		

## Blanking Plate Ordering Code

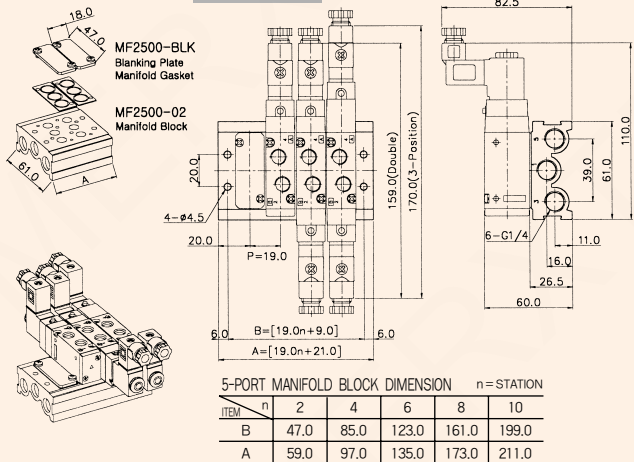
MF2500-BLK	Blanking Plate. (Material:SCP1)
	Manifold Gasket. (Material:NBR)
MF2300-BLK	Blanking Plate. (Material:SCP1)
	Manifold Gasket. (Material:NBR)

# MF2000 MANIFOLD BLOCK

(SF2000 Solenoid & Pneumatic Valve Use)

## 5-Port Manifold Block

MF2500-4



## 3-Port Manifold Block

MF2300-4

